

# The LEGION® System: An Advanced Gravity-Based Entry-Level Phaco Platform



Enhanced performance from a highly-reliable, compact, portable system for phacoemulsification.

The LEGION® System brings the performance of OZil® technology (including OZil® Intelligent Phaco [IP] software) to an entry-level phaco platform.

The advanced gravity-based LEGION® Fluidics Management System (FMS) provides dependable chamber stability

Designed for durability and reliability, and requires minimal servicing over time

Proven OZil® technology with unique, torsional, side-to-side shearing provides increased cutting efficiency, reduced heat and improved followability compared to other ultrasound modalities.

Torsional phacoemulsification reduces the following parameters compared with longitudinal phacoemulsification:



Ultrasound energy usage



Fluid usage



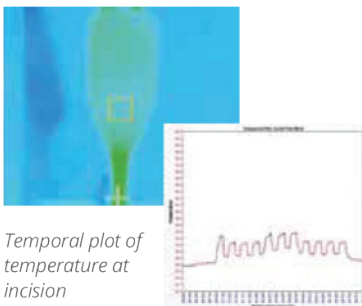
Heat generation



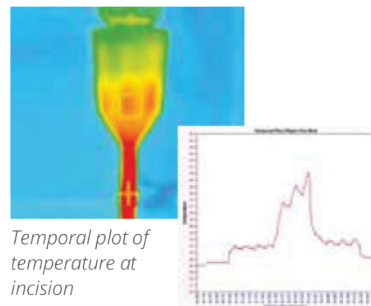
Phaco needle time

Reducing these parameters may result in less corneal endothelial cell loss for better visual recovery and provides additional thermal protection during cataract surgery (ie, prevents corneal burns, which has been a significant cause of inflammation and astigmatism).

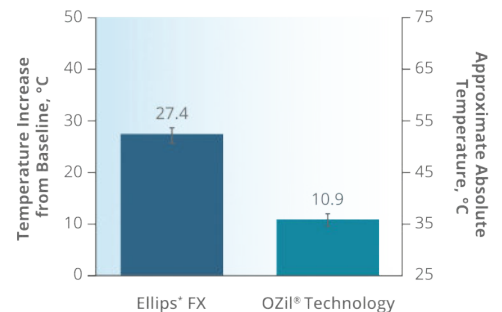
OZil® Torsional IR Temperature Recording



Ellips® FX IR Temperature Recording



Temperature Rise Under Occlusion & Load (50% Amplitude)



29%  
to  
43%

fewer cases of corneal edema were observed with torsional phacoemulsification compared with transversal or longitudinal phacoemulsification, which may contribute to improved post-operative visual acuity.



The easy-to-use, gravity-based LEGION® Fluidics Management System (FMS) is designed to optimize flow and deliver dependable chamber stability.

The FMS features 7 rollers which has been shown to improve rise time.



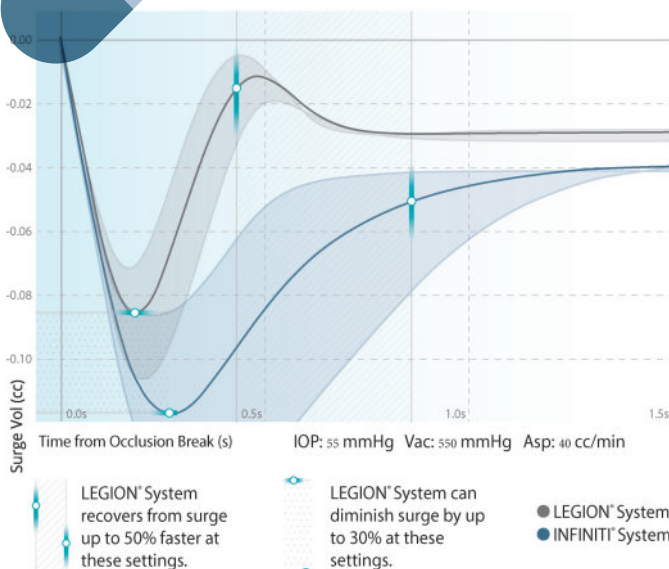
### Optimized total cost management



The FMS cartridge features:

- A dual-segment pump for low pulsatile flow with high capacity for aspiration
- Rotary vent and irrigation values to respond quickly and improve fluid venting

### Occlusion break surge volume with the LEGION® system was lower than the INFINITI® system.



The FMS provides predictable chamber stability and superior surge protection through active support.

Less post-occlusion surge volume is correlated with reduced ocular trauma and fewer complications, such as posterior capsule rupture (PCR) and vitreous loss.